



LAND FOR SALE
7345 Old National Hwy
Atlanta, GA 30349



COMMERCIAL
ATLANTA CLASSIC

Phyllis Minter

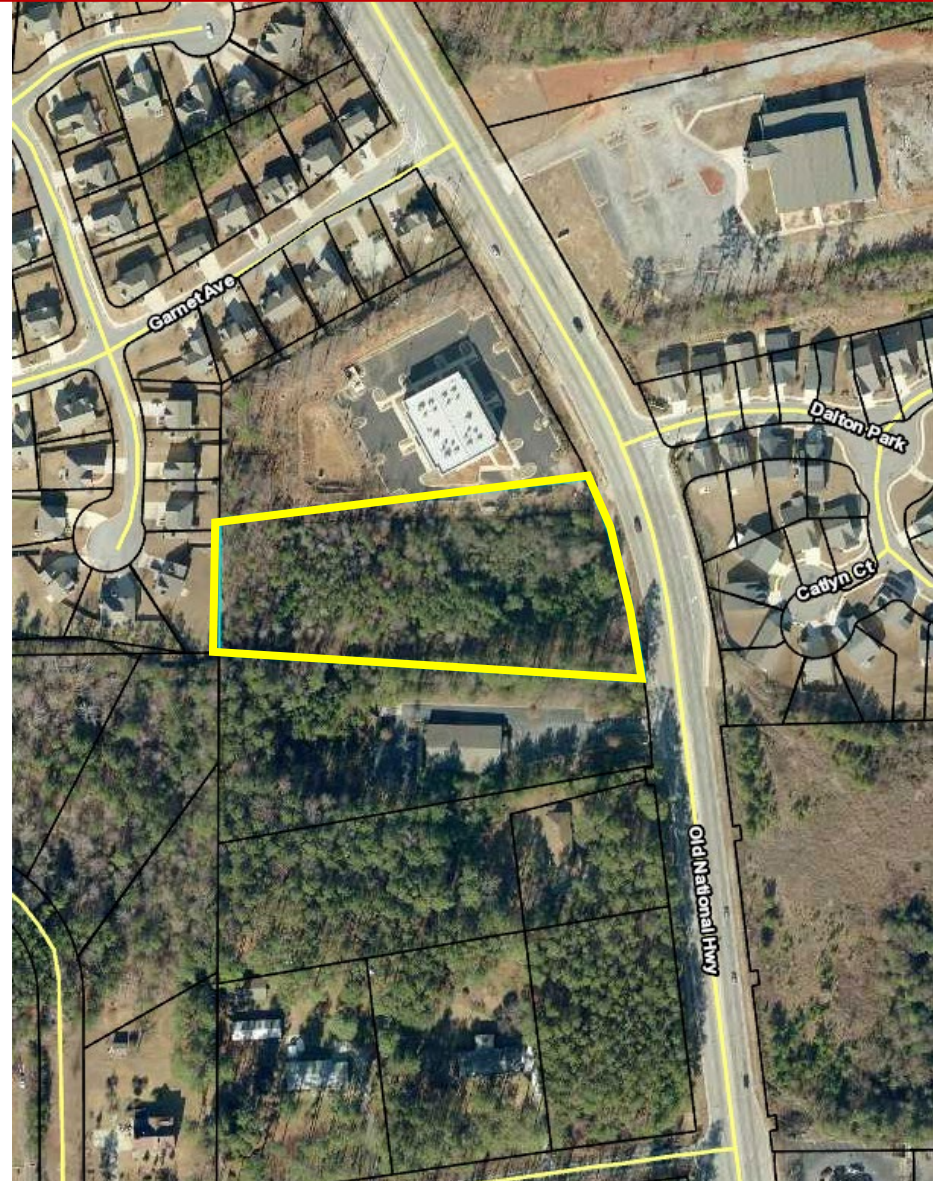
770.256.8168

pminter56@kw.com

PROPERTY OVERVIEW

- +/- 2.65 Acres
- Fulton County – City of South Fulton
- Zoned C-1: Commercial
- All Utilities to Site
- +/- 217 ft Frontage on Old National Hwy
- Level Topography
- 22,700 ADT (2020)
- Less than 5 miles to Exit 64 of I-85
- 7 Miles to the Hartsfield Jackson International Airport
- Ideal Commercial Site with excellent visibility

Offering Price - \$375,000



PROPERTY PHOTOS



SUBMARKET AERIAL



Bethsaida Rd



Old National Hwy

W Fayetteville Rd

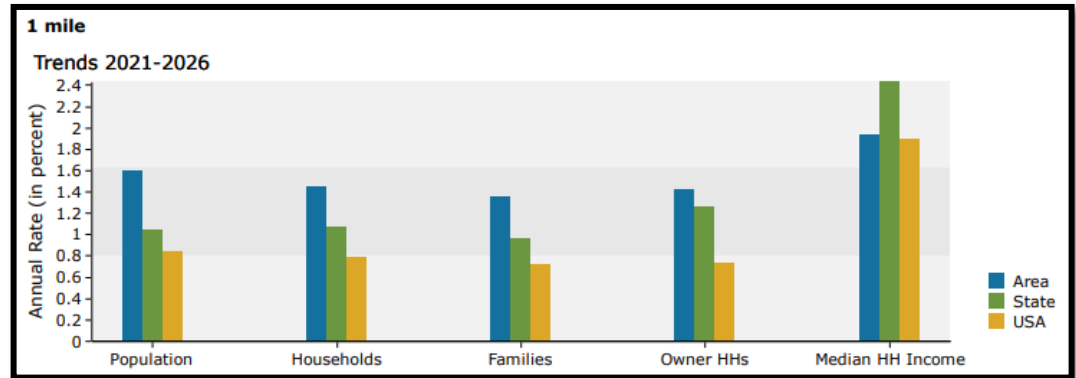
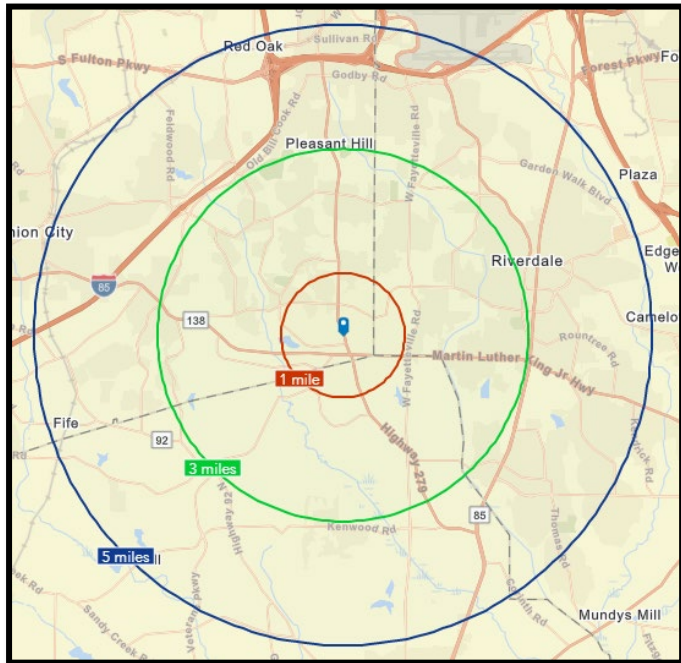
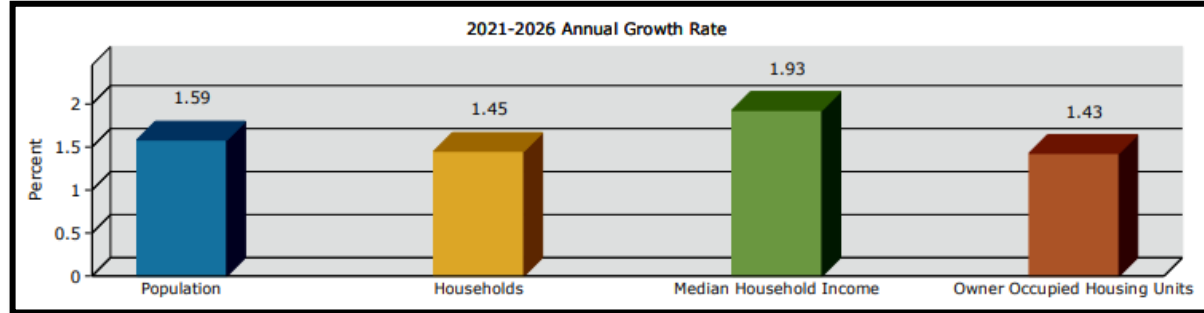
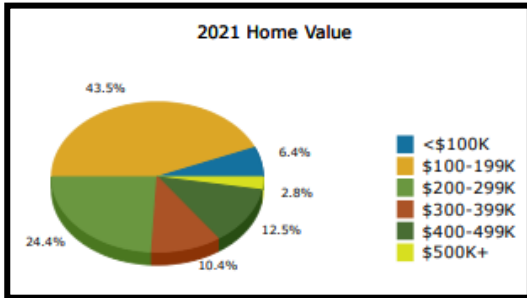
Jonesboro Rd / 138



DISTANCE MAP



DEMOGRAPHICS



	Population	# of Households	Avg Household Income	Median Age
1 Mile	5,660	1,918	\$94,839	40
1-3 Miles	53,021	18,597	\$86,856	38
3-5 Miles	157,383	57,965	\$72,659	35



Phyllis Minter

Associate Broker

P.A. Minter Associates power by
KW Commercial Atlanta Classic

770.256.8168

pminter56@kw.com