



**Carl Semien**

C: 678-851-3340

O: 404-564-9600

[cwsemien@gmail.com](mailto:cwsemien@gmail.com)

[www.semienglobalinvestments.com](http://www.semienglobalinvestments.com)



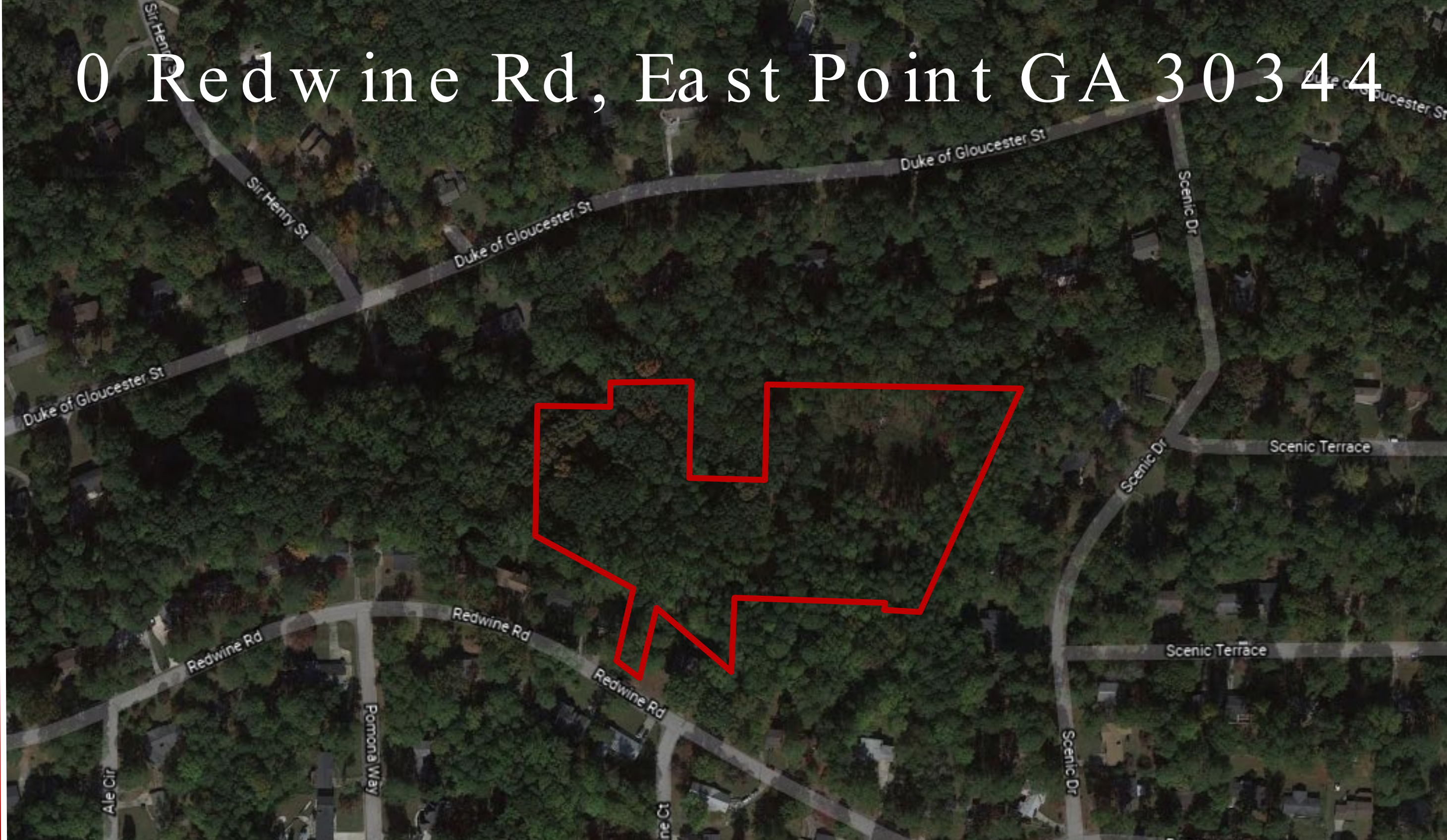
**Phyllis Minter**

C: 770-256-8168

O: 404-564-9600

[pminter56@kw.com](mailto:pminter56@kw.com)

0 Redwine Rd, East Point GA 30344



**+/- 8.77 Acres for Residential Development**

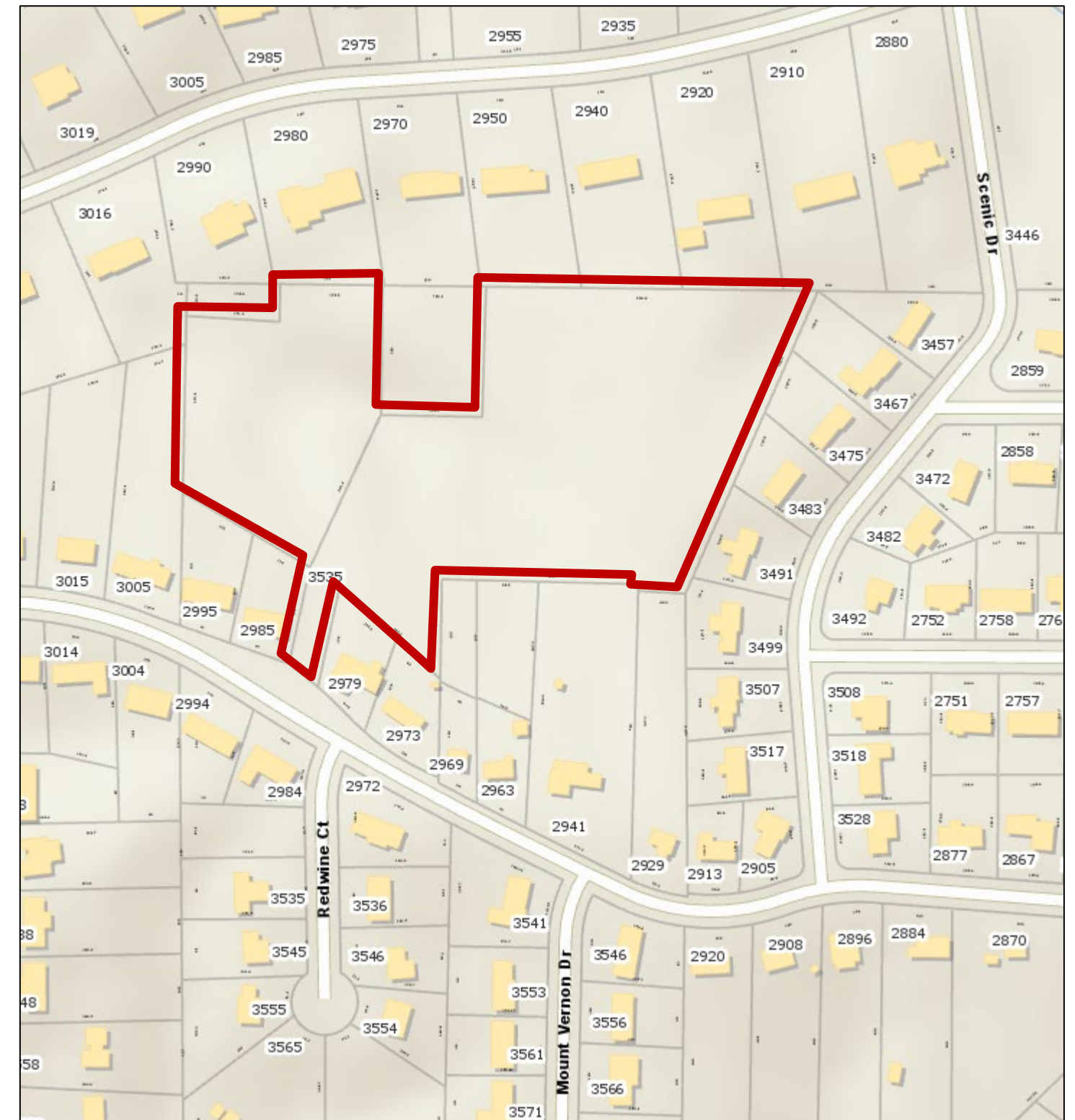
KW Commercial Atlanta Classic • 3800 Camp Creek Pkwy Bldg 1800, Ste 100 • Atlanta GA 30331





- +/- 8.77 Acres
- City of East Point
- Zoned RL- Residential Limited
- Public Sewer Nearby
- Ideal property for a smart builder/ developer!
- Located less than 10 minutes from Jackson-Hartsfield International Airport
- Minutes from I- 285 and Camp Creek Marketplace.

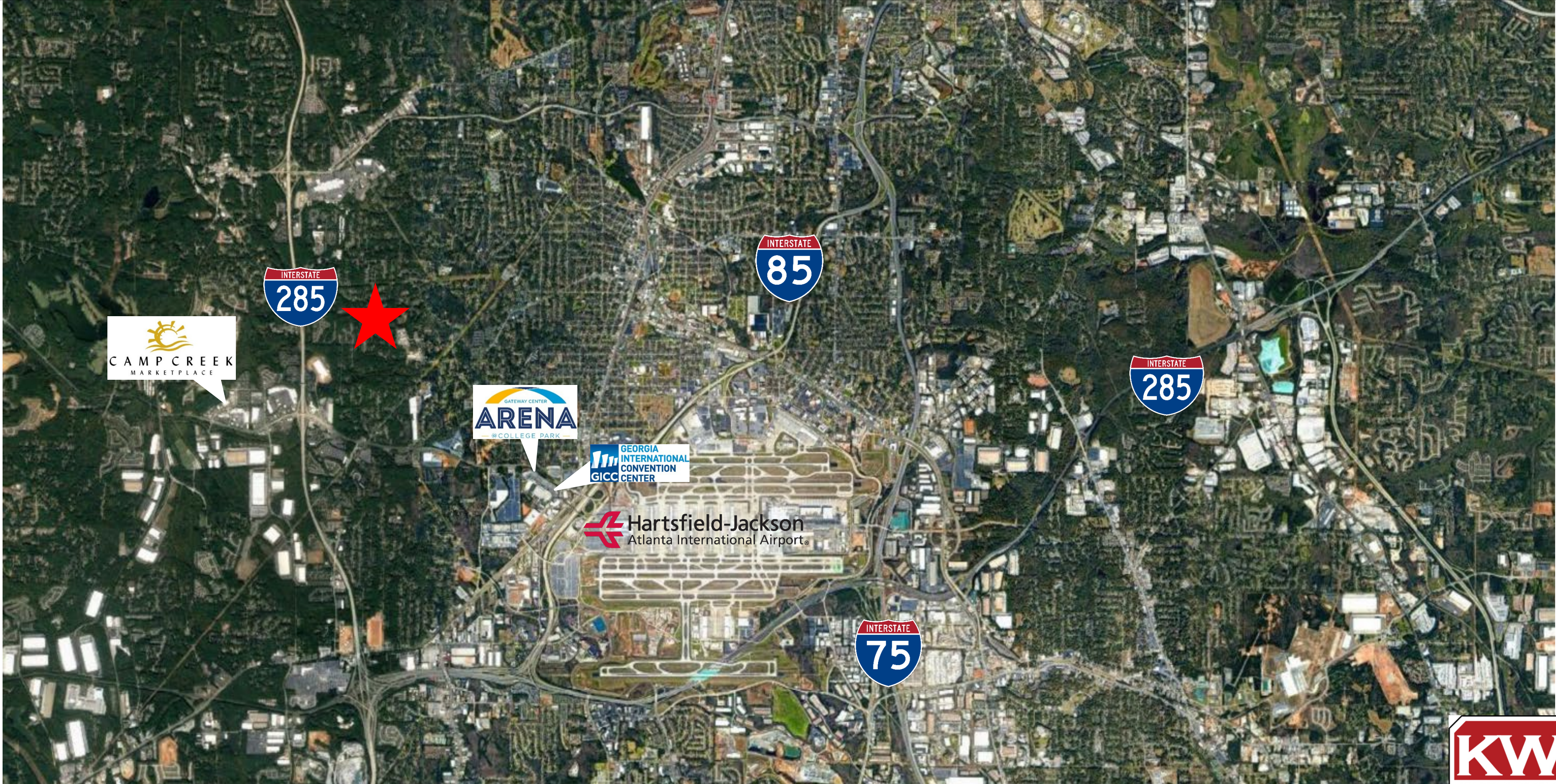
Asking Price: \$300,000



An awesome location inside the perimeter of I -85 and I-75, with a high demand for housing and Buyers running out of places to live, this can be an ideal situation for the next builder. Possible joint venture as well! This is a package deal that consists of 2 parcels of land 1 -6.27 acres and 2 -2.5 acres that are connected.



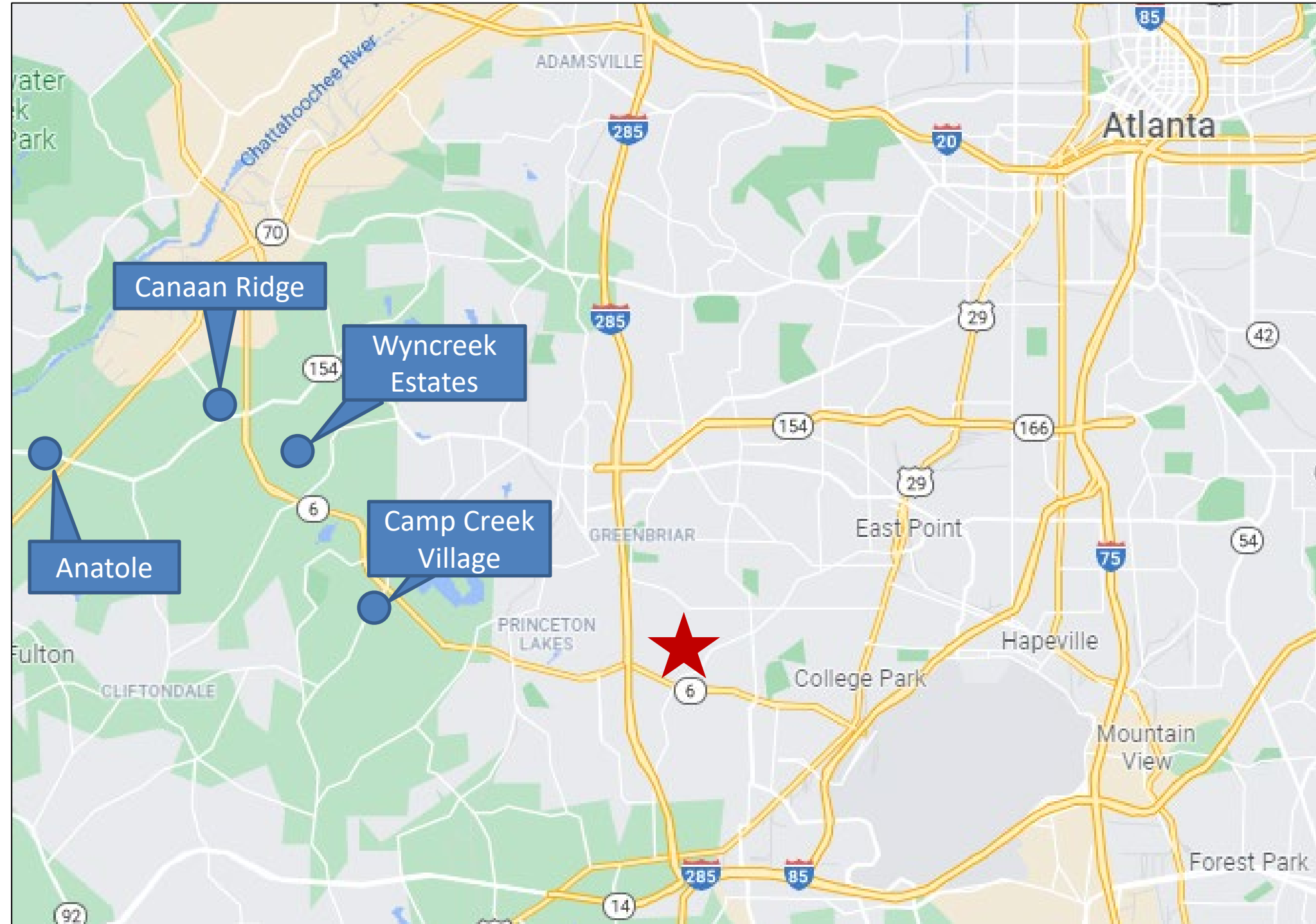
# POINTS OF INTEREST



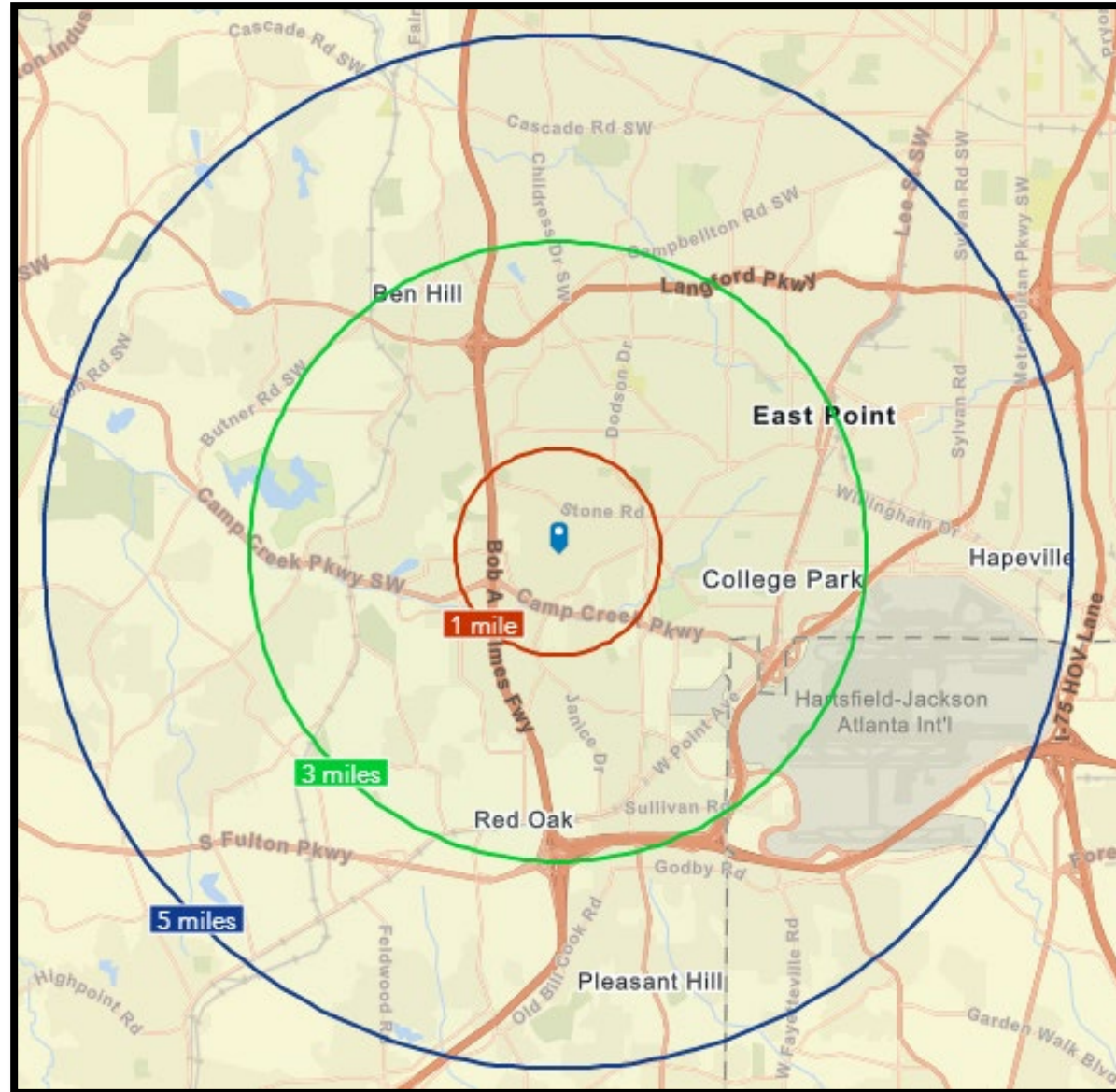


# NEARBY DEVELOPMENTS

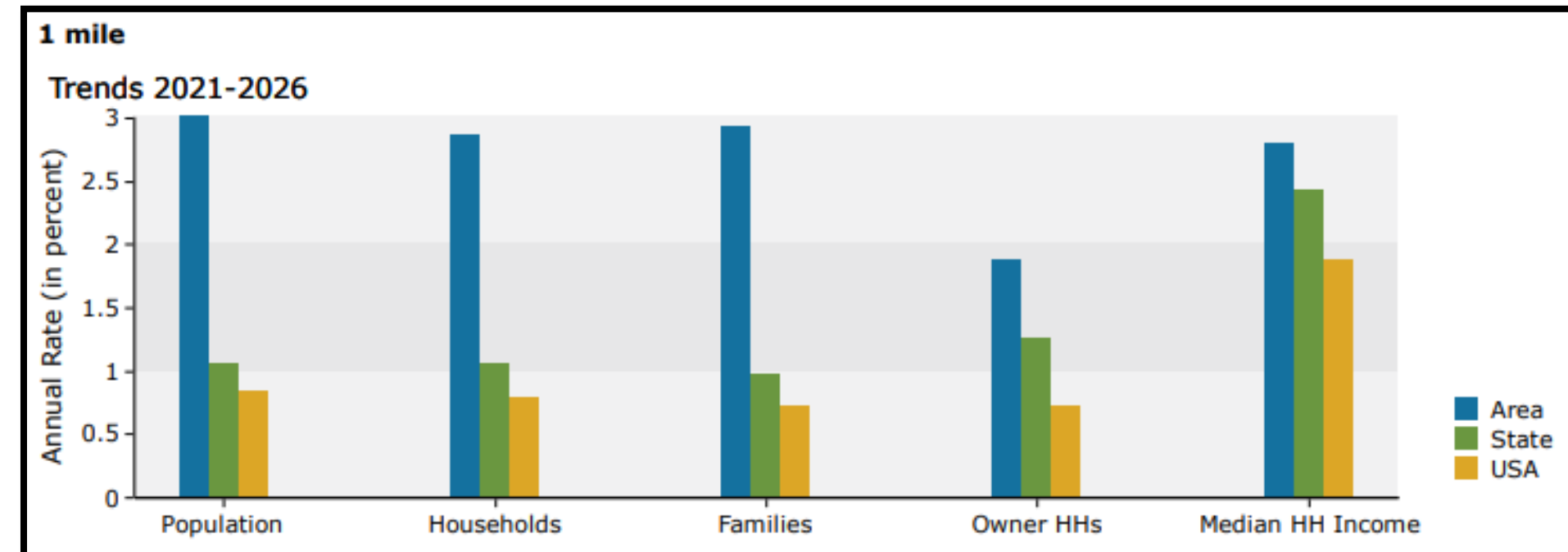
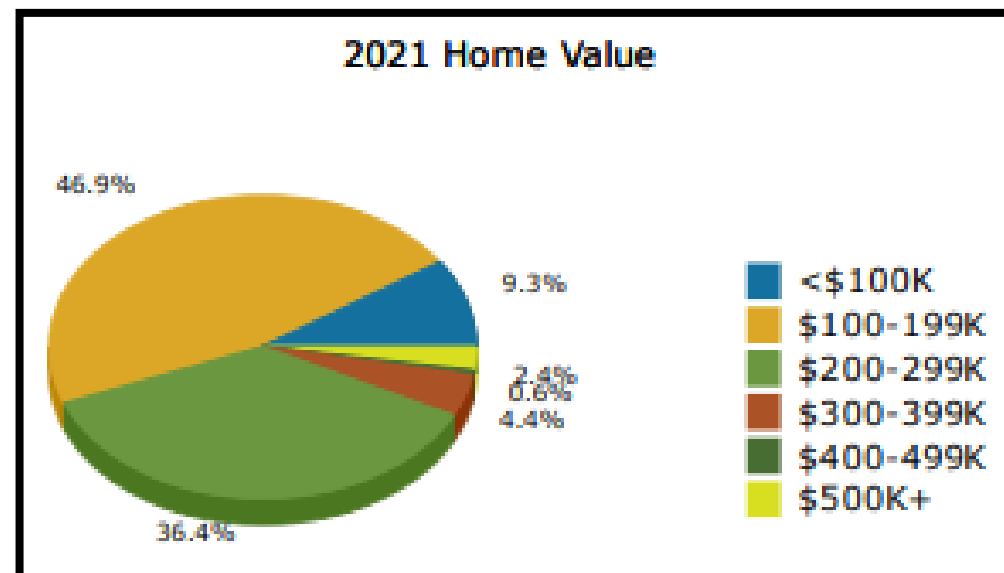
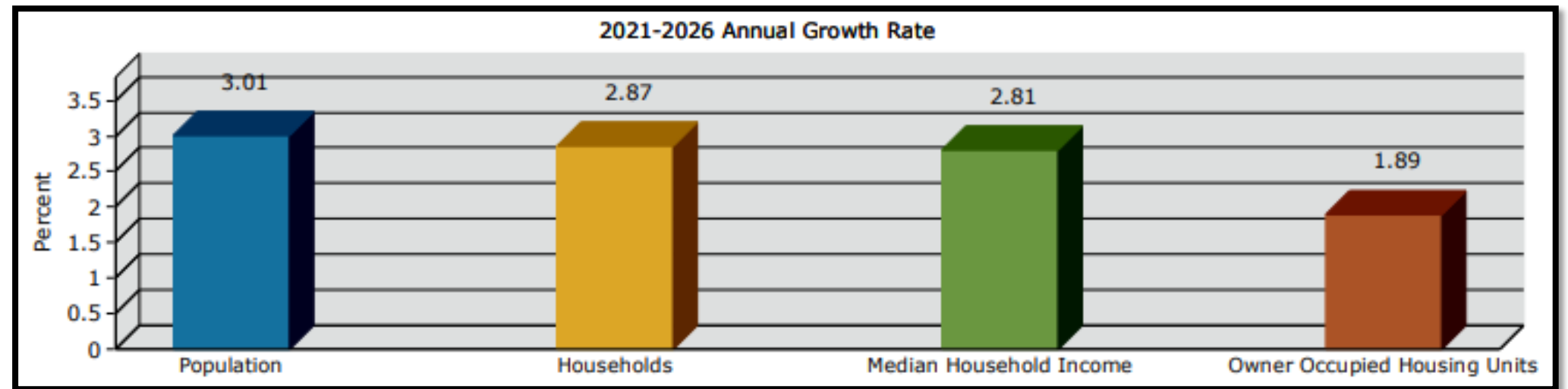
Builder	Subdivision Name	Address	Sqft	Starting Sale Price
Knigh Homes	Wyncreek Estates	2570 Reynolds Rd, Atlanta GA 30331	3,800-4,000	\$470,000
Dan Ryan Builders	Camp Creek Village	4950 Zoya Ct, Atlanta GA 30331	2,340-3,846	\$372,000
KM Homes	Stoney Point	2802 Ridgeview Dr, Atlanta GA 30331	1,422-1,968	\$235,500
Benchmark Homes	Canaan Ridge at Wolf Creek	5918 Bunting Ln, Atlanta, GA 30331	-	\$650,000+
Dan Ryan Builders	Anatole	2331 Polaris Way SW Atlanta, GA 30331	1,389-1,580	\$263,000



# DEMOGRAPHICS



	Population	# of Households	Avg Household Income	Median Age
1 Mile	10,308	3,870	\$48,391	40
1-3 Miles	58,808	23,663	\$61,968	38
3-5 Miles	156,224	61,432	\$63,072	35





# Carl Semien

Associate Partner

C: 678-851-3340

O: 404-564-9600

[cwsemien@gmail.com](mailto:cwsemien@gmail.com)

[www.semienglobalinvestments.com](http://www.semienglobalinvestments.com)

**KW Commercial Atlanta Classic**

**3800 Camp Creek Pkwy**

**Bldg 1800, Ste 100**

**Atlanta, GA 30331**

# Phyllis Minter

Associate Broker

C: 770-256-8168

O: 404-564-9600

[pminter56@kw.com](mailto:pminter56@kw.com)

